



Whatever the challenge,
Concordia will find the best solution!



Contact

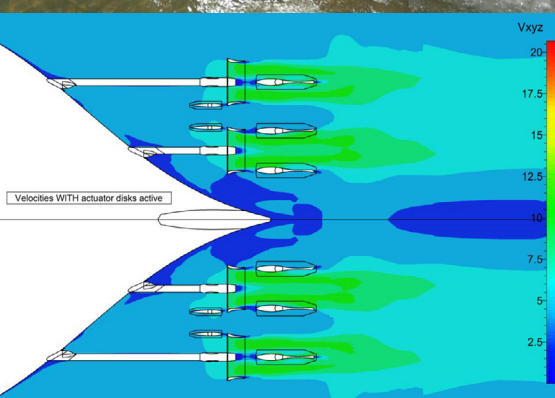
Concordia Group - The Netherlands

Biesboschhaven Noord 7
4251 NL Werkendam
P.O. Box 50
4250 DB Werkendam
t +31 183 60 03 91
e info@concordiagroup.nl

Concordia Group - Brazil

Rua Primavera, 1207, Sala 08
CEP 13.825-000
Holambra - SP - Brazil
t +55 19 38 02 10 98
e info@concordiagroup.com.br

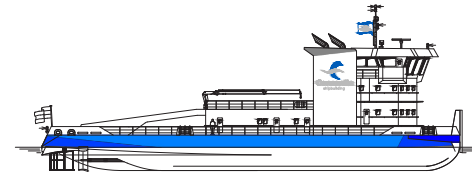




RP 16B Diesel Electric

TECHNICAL INFORMATION

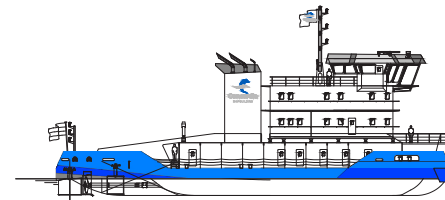
Length o.a.	:	49.50 m
Breadth mld.	:	21.00 m
Draught min	:	6.0 ft – 1.83 m
Deadweight at 6.0 ft	:	200 ton
Draught max	:	7.5 ft – 2.48 m
Deadweight at 7.5 ft	:	680 ton
Height main deck	:	3.50 m
Power main engines	:	3 x abt. 1800 kW total abt. 5400 kW
Bollard pull	:	abt. 680 kN
Crew	:	16 + 1 (optional)



RP 6000

TECHNICAL INFORMATION

Length o.a.	:	43.00 m
Breadth mld.	:	18.00 m
Draught min	:	6.0 ft – 1.83 m
Deadweight at 6.0 ft	:	163 ton
Draught max	:	8.0 ft – 2.45 m
Deadweight at 8.0 ft	:	580 ton
Height main deck	:	3.0 m
Power main engines	:	4 x abt. 1200 kW total abt. 4800 kW
Bollard pull	:	abt. 590 kN
Crew	:	16 + 1 (optional)



RP 7000

TECHNICAL INFORMATION

Length o.a.	:	48.00 m
Breadth mld.	:	20.00 m
Draught min	:	7.5 ft – 2.28 m
Deadweight at 7.5 ft	:	490 ton
Draught max	:	8.2 ft – 2.48 m
Deadweight at 8.2 ft	:	640 ton
Height main deck	:	4.1 m
Power main engines	:	2 x abt. 2500 kW total abt. 5000 kW
Bollard pull	:	abt. 650 kN
Crew	:	18

